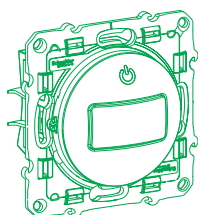


[EN] - instructions for use

Code S5••525

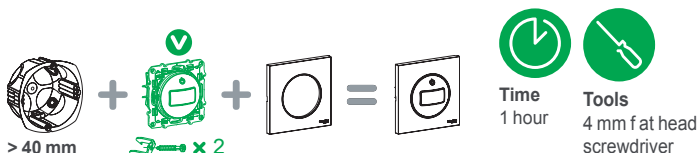


Odace

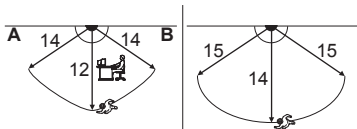
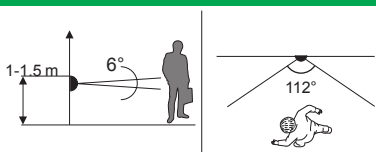
Presence Movement Detector
3 Wires (N)

Schneider
Electric

The presence and movement detector is for indoor use.



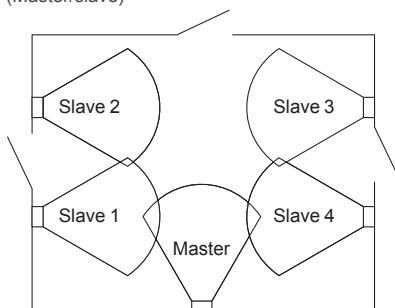
Detection area



A: Movement and presence: 160 m² (12 x 14 m)

B: Movement: 205 m² (14 x 15 m)

Multiple configuration
(Master/slave)



Connection and installation

Safety Instructions and Standards

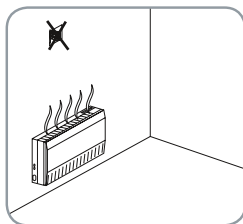
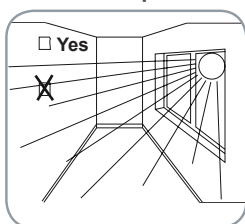


Please follow the assembly and installation instructions provided herein.

To protect yourselves against any electrical risks, disconnect the electric power supply to the device before any operation.

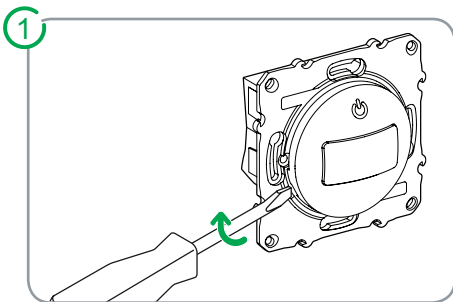
If in doubt, avoid all risks connected to incorrect installation: Ask a qualified professional or electrician for advice or contact Schneider Electric directly ([www.schneider-electric.fr/direct link](http://www.schneider-electric.fr/direct-link)).

Installation tips

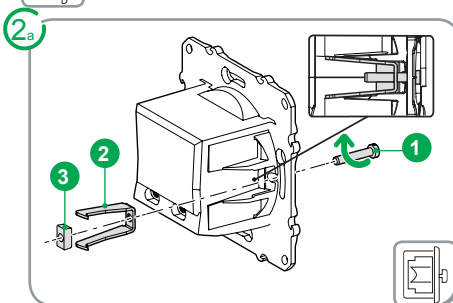


Make sure the field of view of the detector is not obstructed at any point (swaying trees, vehicles passing, etc.).

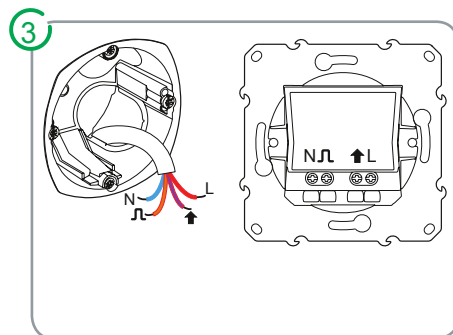
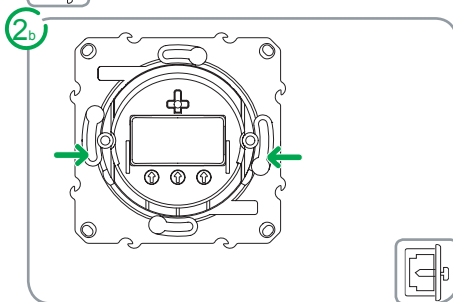
Connection and installation



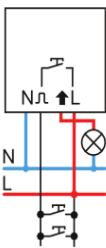
2a, 4a:
Claw assembly



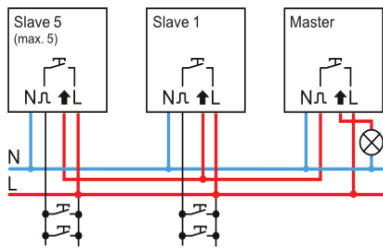
2b, 4b:
Screw assembly



Single Configuration



Multiple Configuration



N Neutral

↑ Relay output

⏏ Internal pushbutton

л Auxiliary input

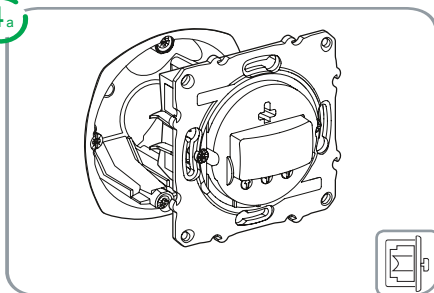
L Line

⏏ External pushbutton

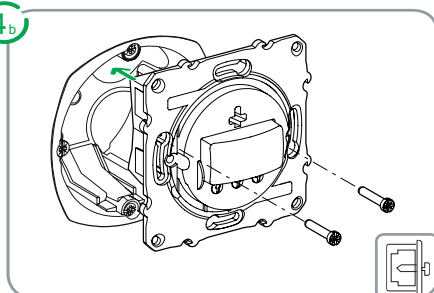
(max. 5)

Connection and installation

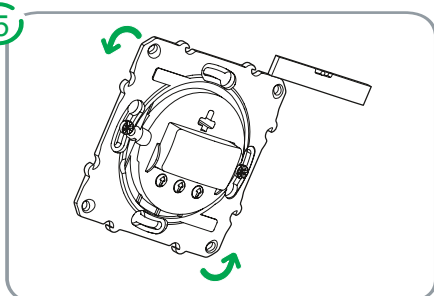
4_a



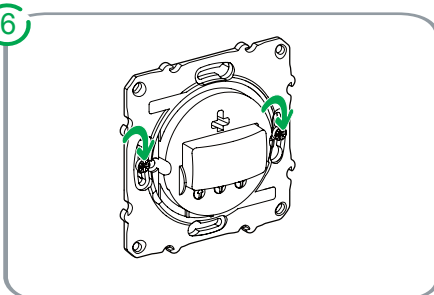
4_b



5

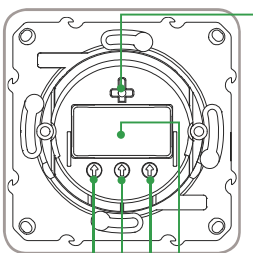


6



Settings

7



Internal pushbutton which can be activated by pressing the front of the detector

Detection lens with light emitting diode (LED)

Operating mode

Lux level setting

Timer setting

Operating mode



Manual: the device will turn on the light when an internal or external pushbutton is pressed.






Automatic: the device will turn on the light when it detects presence or movement, provided the daylight level is below the set lux level.






Slave: the device is connected in a multiple configuration, the information is sent to the master detector.

Settings

Lux level setting

-  **Minimum level**
-  **2/3:** lux level measured during the present daylight level setting.
-  **Max.:** the device will turn on the light, irrespective of the lux level.

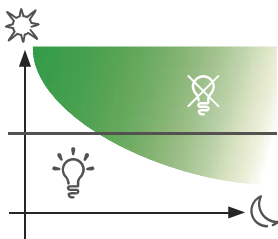
Timmer setting*

-  **Min.:** 5 seconds.
-  **5 minutes,** factory setting.
-  **Max.:** 20 minutes.

*To minimize electricity consumption, set the timer duration according to your requirements.

8

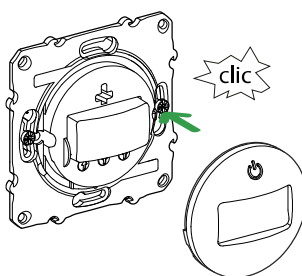
Lux level setting



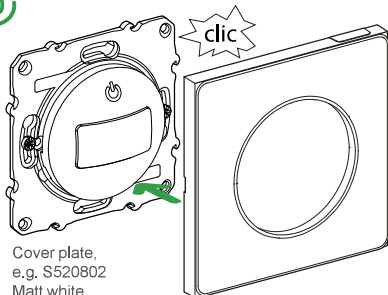
- A** Turn the lux level setting control knob to the Min setting. The LED located behind the lens starts to flash; If the load is activated, the presence detector will disable it.
- B** Move about 0.5 metres away from the detector so that you do not affect the measurement.
Caution: You only have 10 seconds to do this.
- C** Wait for the LED to stop flashing and stay on. Then immediately turn the lux level setting control knob gently towards the graphic symbol of the "sun" until the LED turns off. The lux level is now set.

Finishing + Power on and testing

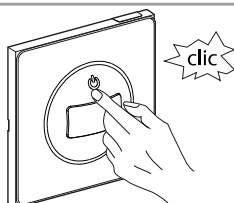
9



10



11



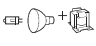
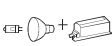
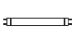





Caution : Wait 15 minutes to perform a functional test. Walk through the detection area and make sure the load is activated : light on, motor on.
Repeat this operation by pressing the pushbutton.

Technical specifications

Selection modes	A: automatic	yes
	M: manual	yes
	S: slave (max. 5)	no
Lux level	5 - 1000 lux	
Start-up time:	10 s	
Timer	5 s - 20 min	
Extended timer	30 min	
Pushbutton functions	Short activation (< 0.5 s): the device turns on the light for the set timer duration	
	Extended activation: the device turns on the light for 30 minutes	
Mains voltage	230 V AC, 50 Hz	
Protective fuse	10 A	
Operating temperature	5 - 35°C	
Standards	EN61000-6-1, EN61000-6-2, EN61000-6-3, EN61000-4-13 class 2 and EN60669-2-1.	

Loads connected

	Incandescent lamps (230 V AC)	2300 W
	Halogen lamps (230 V AC)	2000 W
	Low voltage halogen lamps with variable intensity iron core transformers	1050 VA
	Low voltage halogen lamps with variable intensity electronic transformers	1150 VA
	Fluorescent tubes, parallel compensated 140 µF (230 V AC)	2000 VA cosφ=0.9
	Fluorescent tubes, with electronic ballast (230 V AC)	900 W
	Compact fluorescent lamps (230 V AC)	500 VA
	Motor, fans (230 V AC)	200 VA

Recycling and Warranty



Do not throw this product away with regular rubbish. Dispose of it in a dedicated waste collection and disposal centre. Please contact your local council for your nearest one.

Guaranteed **2** years

Schneider Electric...
Contact your retailer...

In the event of a presence detector failure, please check the "FAQs - Odace" section on www.schneider-electric.fr or email the helpline at : vosquestions@schneider-electric.com
This product must be installed, connected and used in accordance with the applicable installation standards and/or regulations in force. Due to changes of equipment standards, the characteristics and overall dimensions described herein are only binding after our services have been rendered.

Schneider Electric Industries SAS

35, Joseph Monier Street
CS 30323
F- 92506 Rueil Malmaison Cedex
www.schneider-electric.com

LSB02752EN