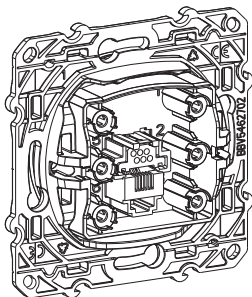
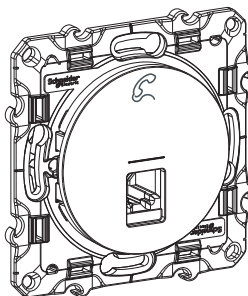


Odace

S5--497 / S5--494 (RITA)

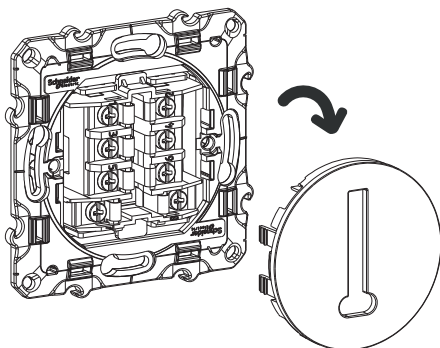
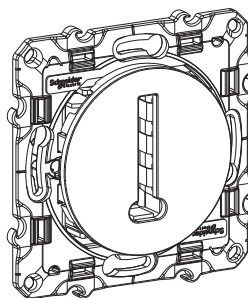
fr RJ12 6 cont à vis
 es Toma RJ-12 6 cont.
 nl RJ12 contactdoos met schroeven
 pt Tomada RJ12-6 contactos
 en RJ12 6 cont screw



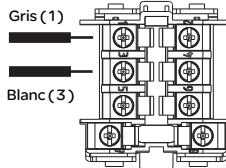
| | | RJ12 | | | | | |
|-----------------|---|------|----|----|----|----|---|
| Ref. | fr Borne es Borne nl Klem Pt Connector en Connector | 1 | 2 | 3 | 4 | 5 | 6 |
| S5--497 | fr Symbole es Símbolo nl Simbool pt Símbolo en Symbol | 2 | TX | L2 | L1 | TS | T |
| S5--494 RITA | fr Symbole es Símbolo nl Simbool pt Símbolo en Symbol | | | | | | |

S5--496

fr Conjoncteur téléphonique 8P
 es Toma telefonica FR 8 cont
 nl Telefoonaanluiting franse standard
 pt Tomada telefonica FR 8 cont
 en Phone conjoncteur 8 pins

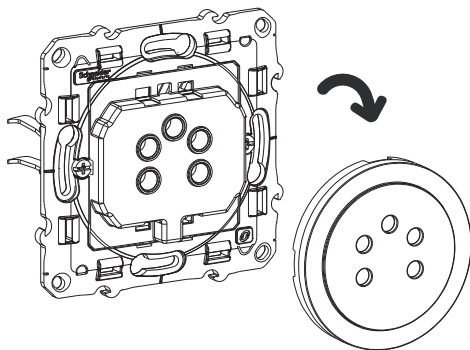
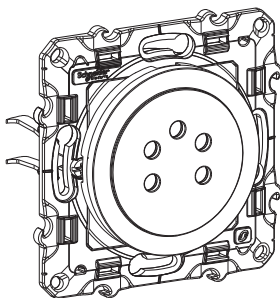


Branchement Standard
 France Télécom 1 et 3

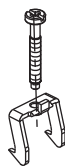


S5--498

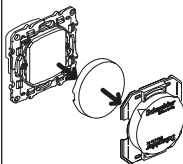
fr Prise Belgacom 5 pins pour téléphone
 es Toma Belga teléfono 5 pines
 nl Telefoonaanluiting Belgacom
 pt Tomada Belga telefono 5 pines
 en Belgacom phone socket 5 pins



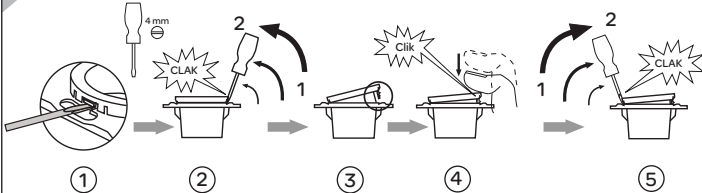
S520690



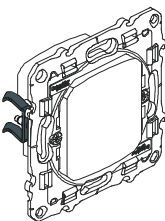
A



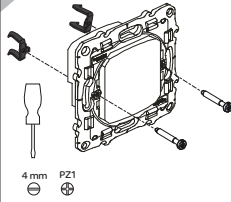
1



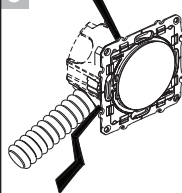
B



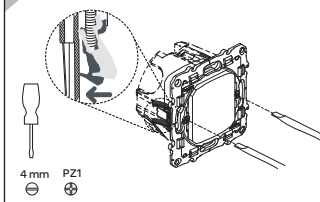
1



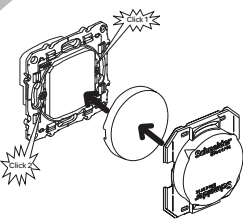
C



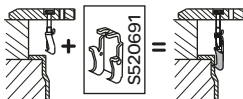
1



2



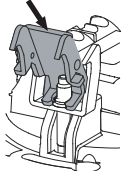
i



1



2



3

